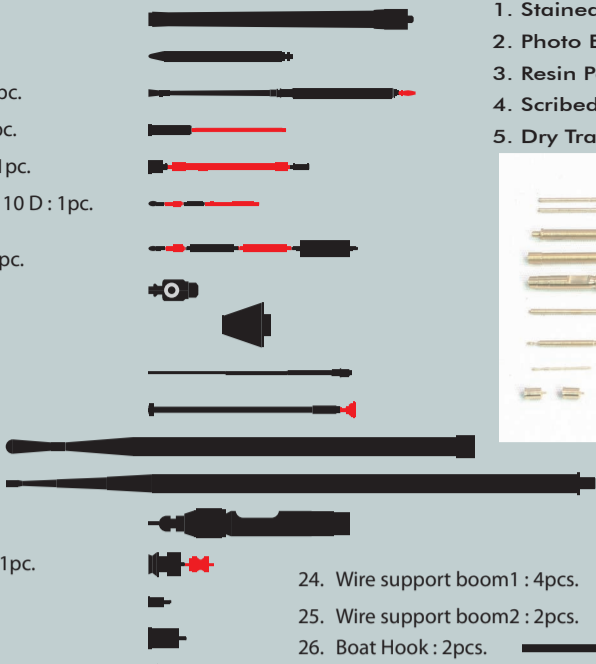


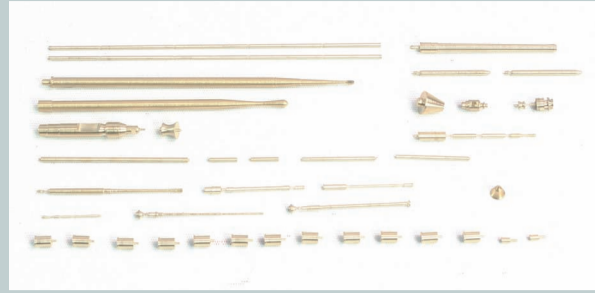
<Scribed Brass Parts : 60Pcs.>

- 01. 88mm Barrel : 1pc.
- 02. 88mm Air : 2pcs.
- 03. 20mm Barrel A + Part1 B : 1pc.
- 04. 20mm Part2 A + Part3 B : 1pc.
- 05. 20mm Part4 A + 5 B + 6 C : 1pc.
- 06. 20mm Part7 A + 8 B + 9 C + 10 D : 1pc.
- 07. 20mm Part11 A + 12 B + Hatch Axis1 C + 1 C + 2 D : 1pc.
- 08. 20mm Connector : 1pc.
- 09. 20mm Base : 1pc.
- 10. Antenna : 1pc.
- 11. Staff A + Compass B : 2pcs.
- 12. Scope 1 : 1pc.
- 13. Scope 2 : 1pc.
- 14. UZO : 1pc.
- 15. Rear Light A + Wire Inlet B : 1pc.
- 16. Bitt 1 : 2pcs.
- 17. Bitt 2 : 12pcs.
- 18. Capstan : 1pc.
- 19. Voice Tube : 1pc.
- 20. Bell : 1pc.
- 21. Netcutter boom 1 : 1pc.
- 22. Netcutter boom 2 : 2pcs.
- 23. Netcutter boom 3 : 2pcs.



< Contents >

- 1. Stained Wooden Deck
- 2. Photo Etching : 2 Sheets
- 3. Resin Parts : 1 Pc.
- 4. Scribed Brass : 60 Pcs.
- 5. Dry Transfer : 1 Sheet



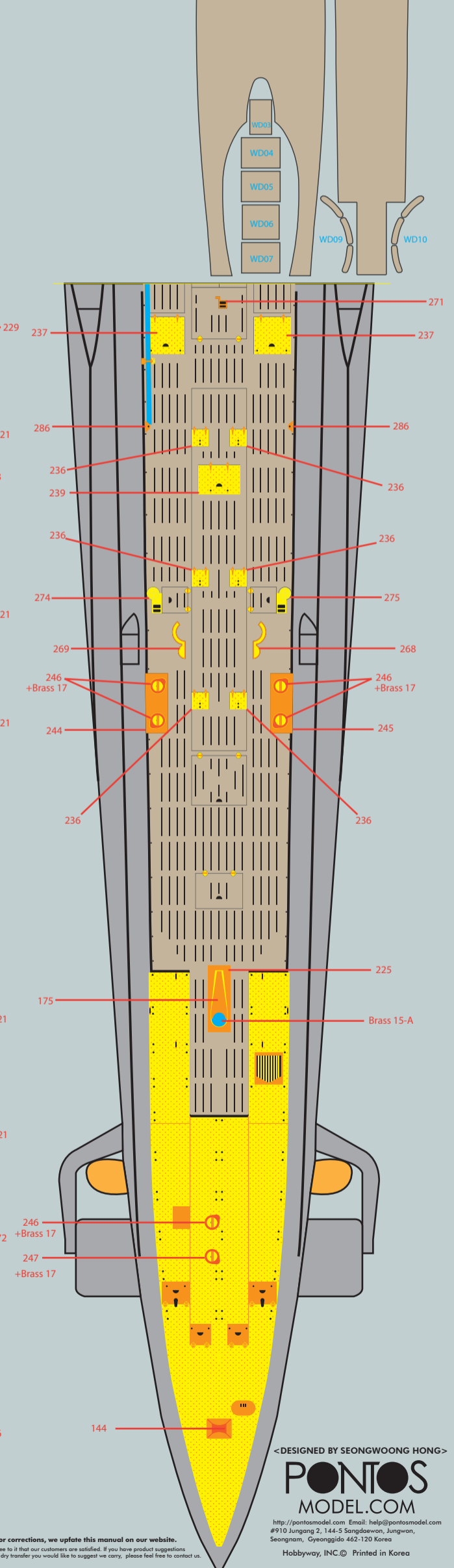
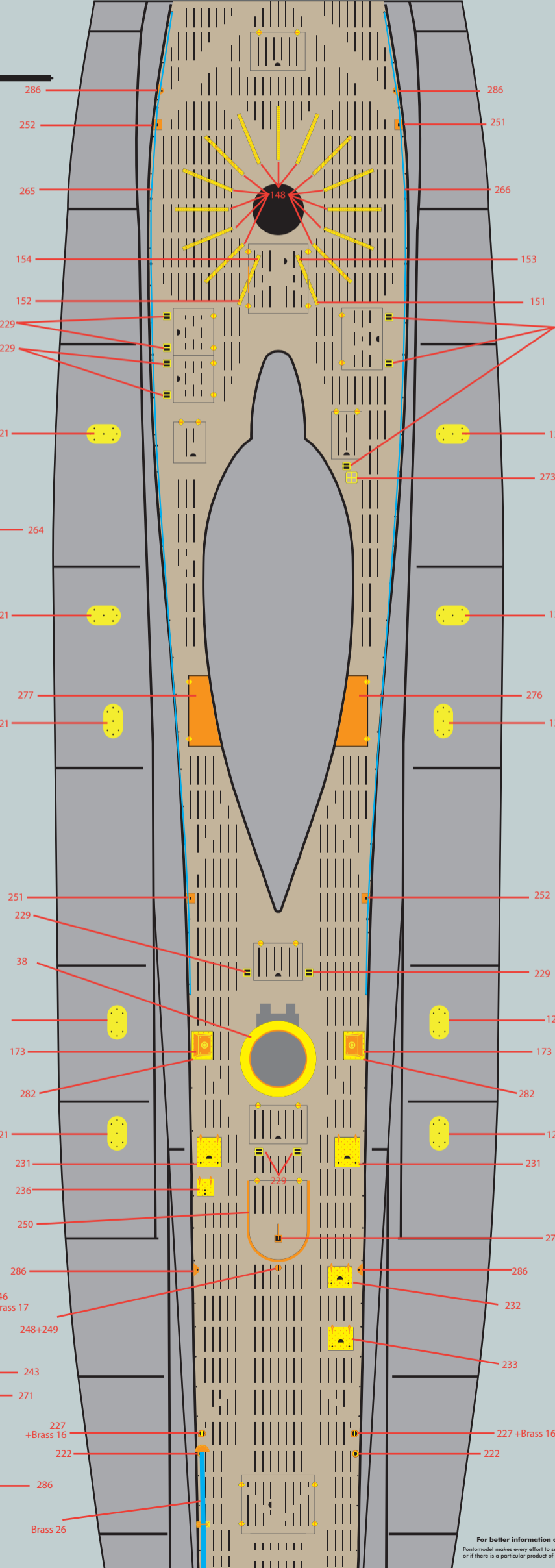
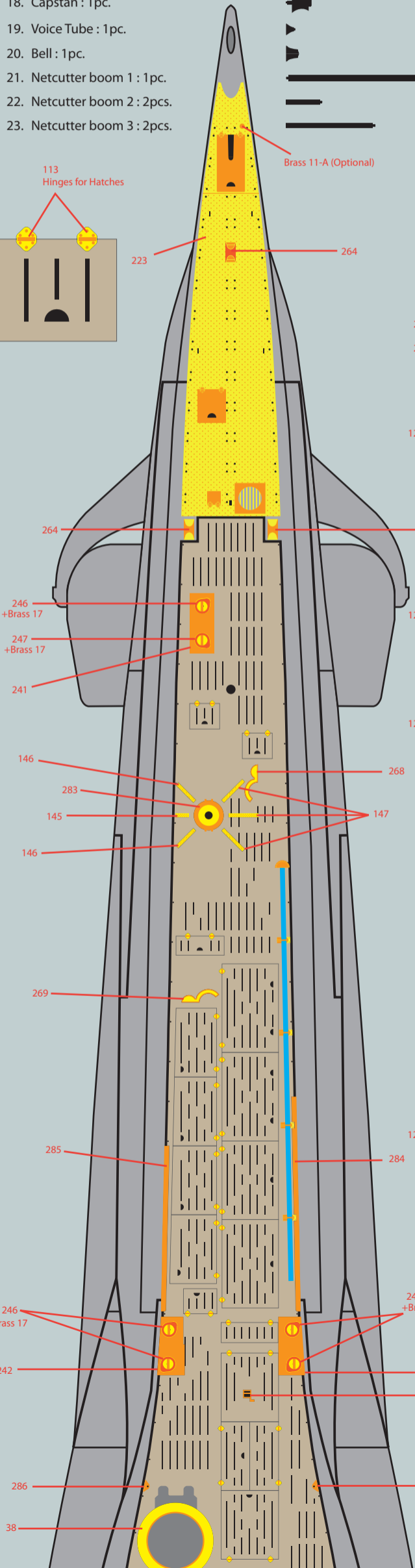
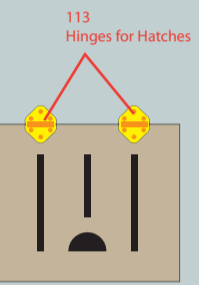
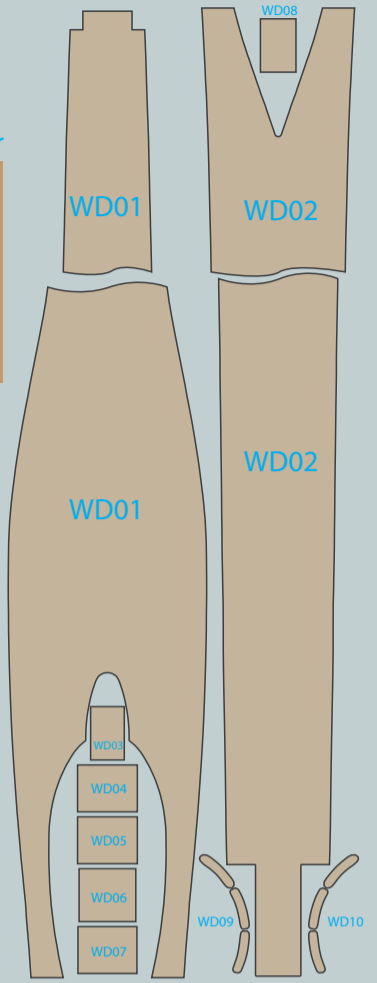
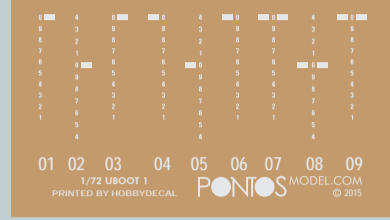
Resin01

Polished Brass Screws



72001F1 1/72 U-BOOT TYPE VII C DETAIL UP SET

Hull Draft Marking Dry Transfer



<DESIGNED BY SEONGWOONG HONG>

PONTOS
MODEL.COM

http://pontosmodel.com Email: help@pontosmodel.com
#910 Jungang 2, 144-5 Sangdaewon, Jungwon,
Seongnam, Gyeonggido 462-120 Korea

For better information or corrections, we update this manual on our website.
Pontosmodel makes every effort to see to it that our customers are satisfied. If you have product suggestions
or if there is a particular product of dry transfer you would like to suggest we carry, please feel free to contact us.

Hobbyway, INC. Printed in Korea