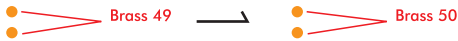


**<23001F1/22001F1 Bismarck 1941 detail up set Instruction corrections :
Last modified at 20th August 2013>**

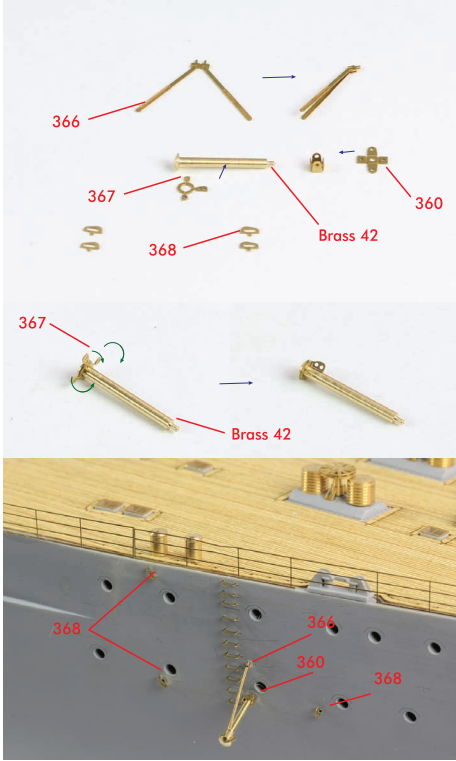
<Bitt Small>



<Bitt Large>



<Screw Guard>

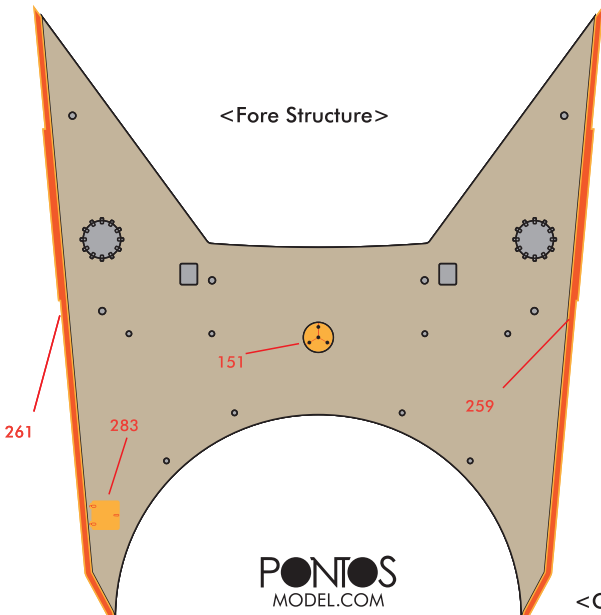


<Wing Bridge >



505/513/569/558 : Port side Wing Bridge parts
506/510/568/559 : S/B side Wing Bridge parts

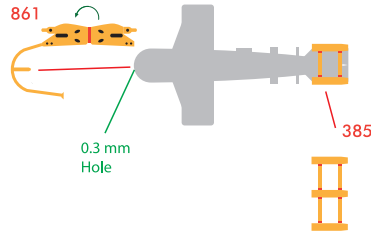
<Fore Structure>



PONTOS
MODEL.COM

<http://pontosmodel.com> Email: help@pontosmodel.com
#910 Jungang 2, 144-5 Sangdaewon, Jungwon,
Seongnam, Gyeonggido 462-120 Korea
Hobbyway, INC. © Printed in Korea

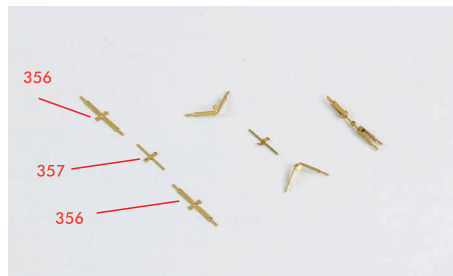
<Paravane>



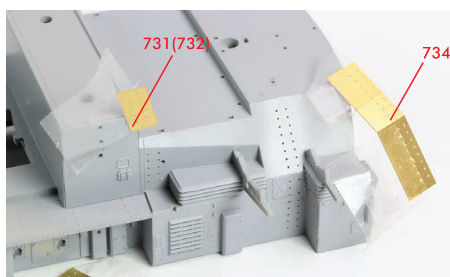
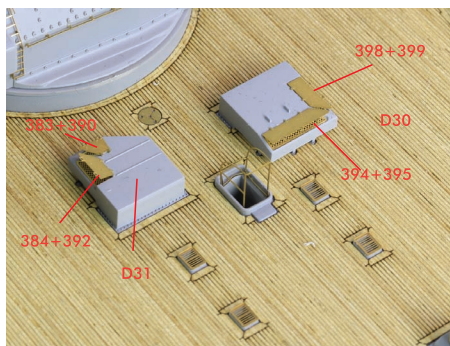
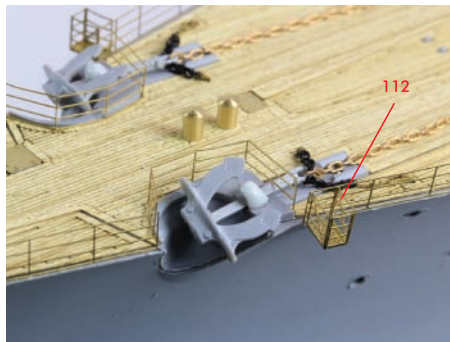
<358 is deckeye for rigging and wiring>



<Turnbuckle for rigging wire and Anchor chains>



<Leadman's Platform>



<Correction and Addition of PE parts>

287:20EA 288:20EA 127:4EA 128:4EA 355:3EA 700:1EA
To get this Instruction sheet and Correction PE,
Please contact your retail shop or our Email help@pontosmodel.com

<Ladders & Steps>

